

Blindnietmutter HEXATOP-KLSK

Stahl verzinkt

Kleiner Senkkopf | Teilsechskant | offen

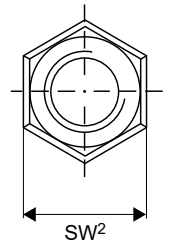
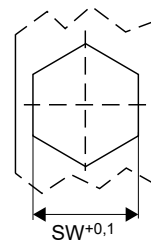
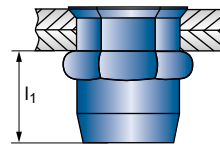
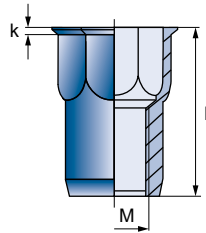


Für zöllige Bohrungen
INCH



CAD
DATEN
ONLINE

Serie
893



C4C [1.0303]

M		I	Nr.		€/ 1.000
M4	0,5 - 2,0	10,0	10893040200	500	203,54
SW 6,4	SW² 7,0	k 0,4	l₁ max. 7,5	4 Nm	3800 N
M5	0,6 - 3,0	12,5	10893050300	500	232,25
SW 7,2	SW² 8,0	k 0,5	l₁ max. 9,0	6 Nm	6000 N
M6	0,5 - 3,0	15,5	10893060300	500	322,93
SW 9,6	SW² 10,5	k 0,5	l₁ max. 11,5	11 Nm	9500 N

M		I	Nr.		€/ 1.000
M8	0,5 - 3,0	18,0	10893080300	250	417,14
SW 10,6	SW² 11,5	k 0,6	l₁ max. 14,0	24 Nm	12500 N
M10	1,0 - 4,0	22,5	10893100400	250	597,83
SW 12,7	SW² 14,4	k 0,8	l₁ max. 16,0	50 Nm	37000 N